



October 2014 Temperature and Precipitation Summary

October 1st – 17th: October began with a week of clear skies, dry and warm conditions as westerly flow dominated the west. A strong low pressure system passed through Utah on the 1st and 2nd, and continued across the Rockies and into the Great Plains, but high pressure developed over the southwest. Maximum temperatures along the lower Colorado River were in the low 100s and upper 90s from the 3rd through the 6th. Nighttime temperatures dipped below freezing in the Flagstaff area on the 29th of September, and continued to fall below freezing through the 6th. By the 7th, an upper level low pressure system moved in to the southwest and combined with moisture from Hurricane Simon bringing widespread rainfall across the state from the 8th through the 11th. On the 8th, Davis Monthan reported 1.61”, Bisbee reported 1.46”, Eloy had 1.35”, Nogales had 1.12”, Coronado National Monument had 0.91”, Safford had 0.58”, and on the 9th Lost Dutchman State Park in Apache Junction reported 1.12”, Kingman had 0.76”, Coronado National Monument had 0.75”, Safford had 0.51”. By the 13th, a high pressure system began developing behind a cold front, and kept skies clear until the 18th.

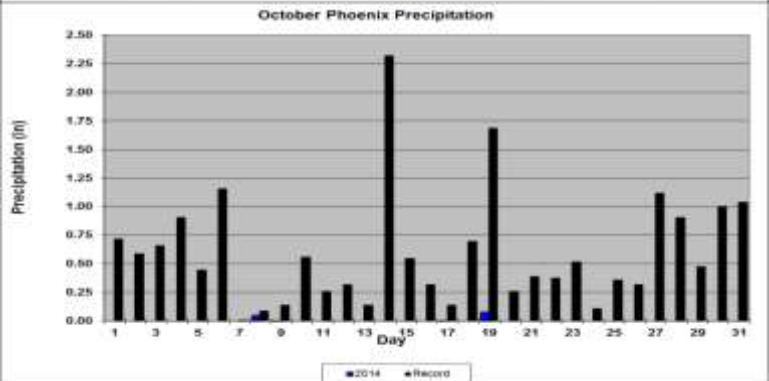
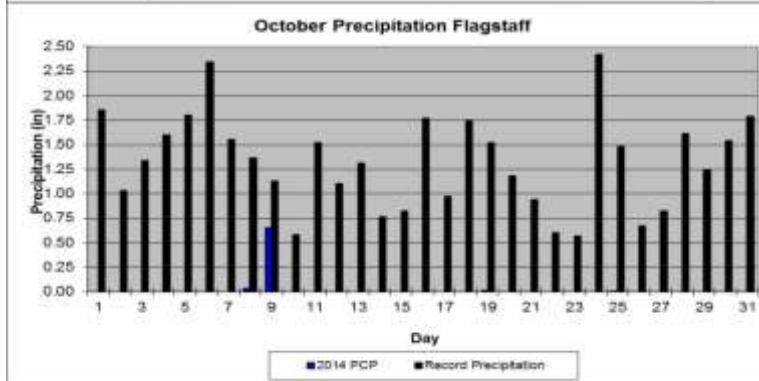
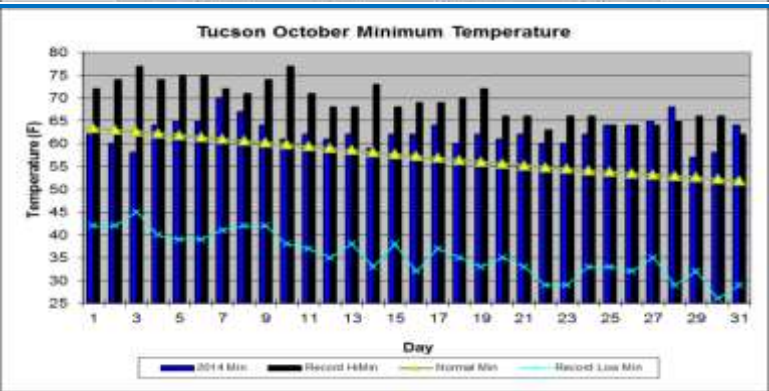
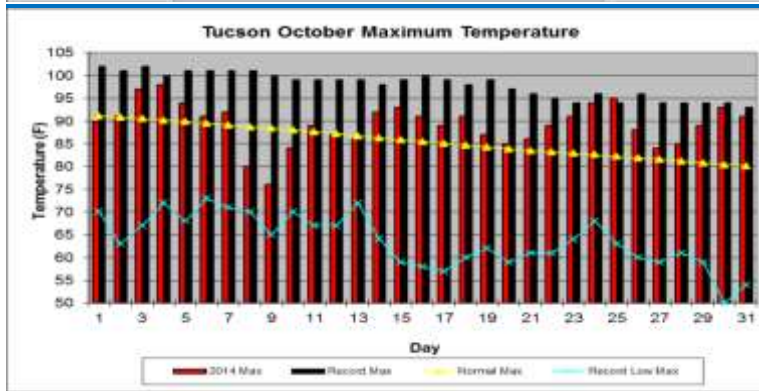
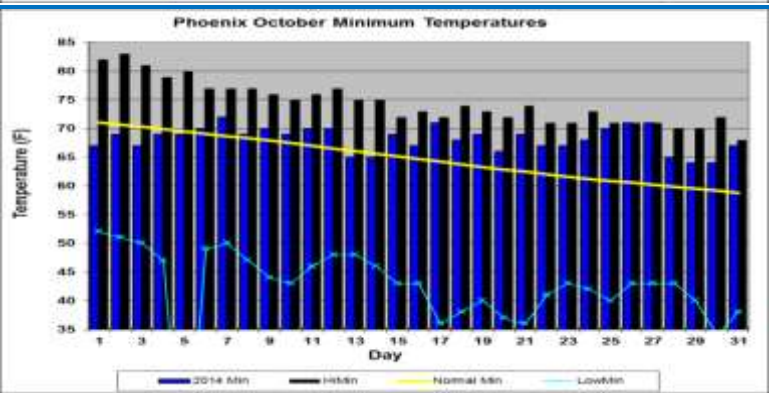
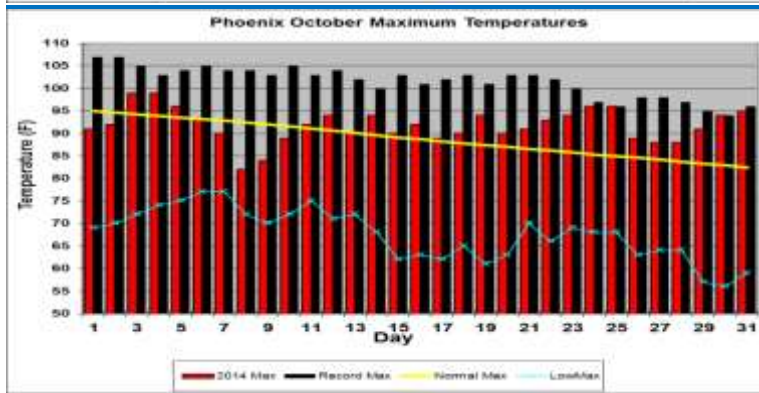
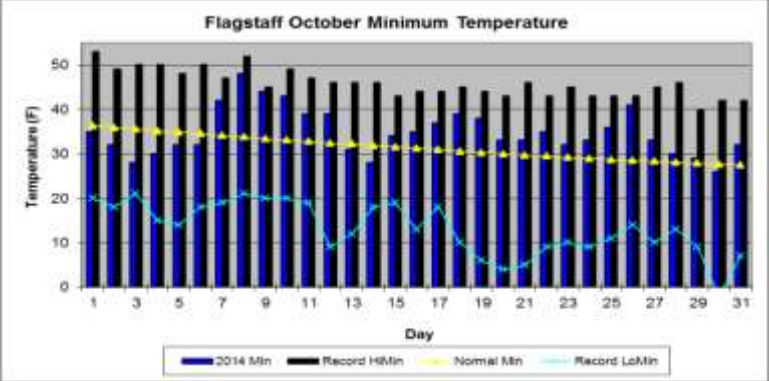
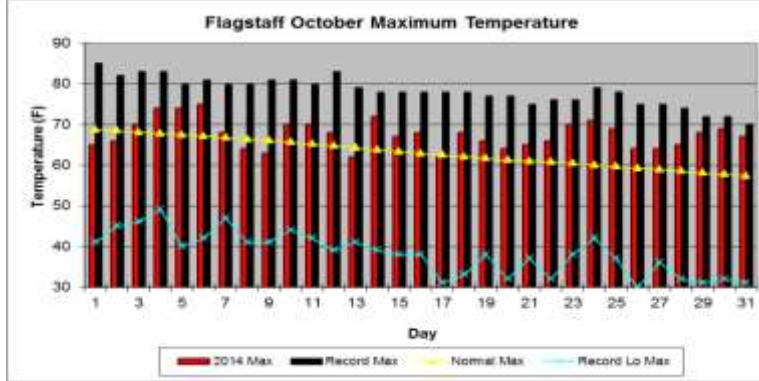
October 18th – 31st: Another upper level low pressure system moved in on the 18th, bringing some rainfall to the southeast, with Safford receiving 1.14” on the 19th. Tucson received 0.30” and Cottonwood had 0.16”. Light showers continued through the 22nd. On the 23rd, high pressure returned and temperatures went back up to the mid to upper 90s across the southwest deserts. High pressure remained in place through the end of the month, ensuring warm, dry conditions.

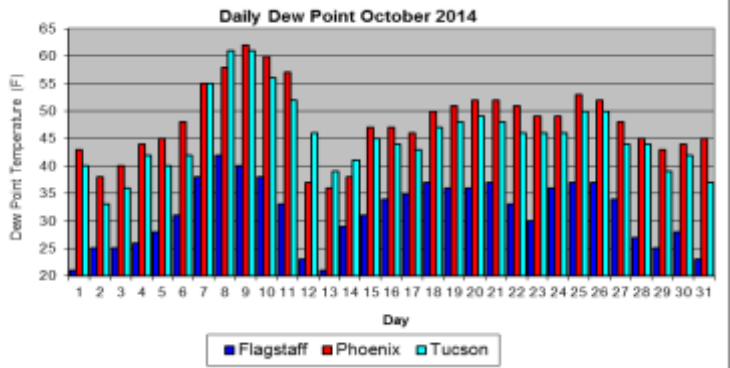
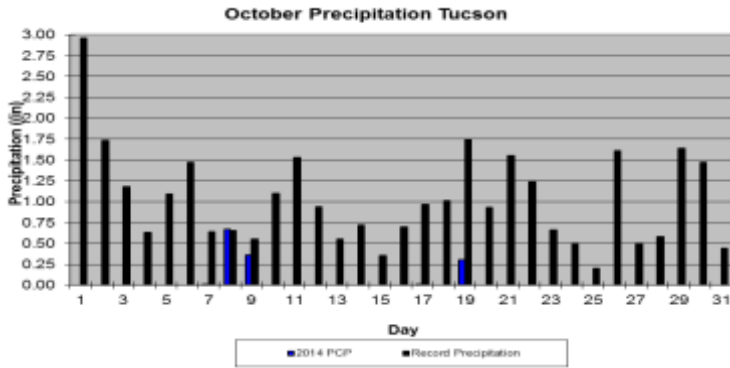
In This Issue: Overview of October, graphs of the October daily maximum and minimum temperatures, precipitation, mean daily dew points for Flagstaff, Phoenix, and Tucson; October climate statistics, maps of mean monthly maximum and minimum temperatures, precipitation, dew points, wind speeds for October; and graphs of the mean October temperature and precipitation for the period of record for Tucson, Phoenix, and Flagstaff, graphs of the cumulative precipitation for the calendar year for Flagstaff, Phoenix, and Tucson. Climate calendars for Flagstaff, Phoenix, Tucson, Prescott, Winslow and Yuma, including daily and monthly normals and extremes, for each month of the year, can be downloaded directly from the State Climate website. See p. 19 of this report for calendar abbreviations.

Data are preliminary and are from the National Weather Service Forecast Offices in Flagstaff, Phoenix and Tucson.

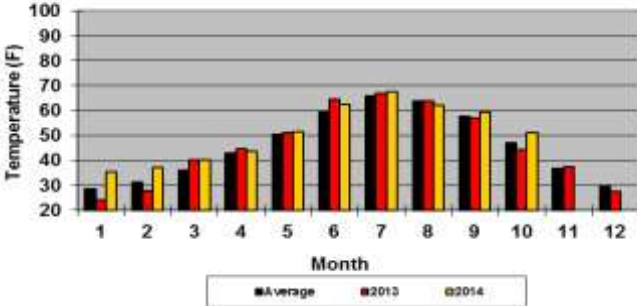
****Note:** The discrepancy between the Statewide Temperature and Precipitation values for Phoenix, Flagstaff and Tucson and the daily values in their graphs are due to the reporting times. Statewide Temperature and Precipitation values are taken at 5pm, while official daily records at the airports are taken from Midnight to Midnight.

October 2014 Daily Temperature, Precipitation, & Dew Point for Flagstaff, Phoenix, and Tucson

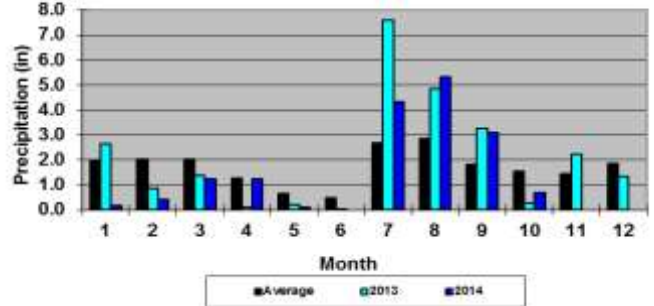




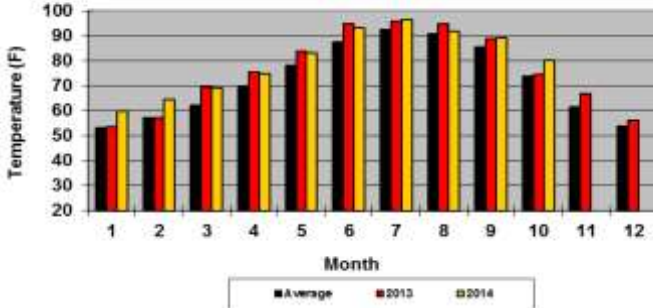
Flagstaff Mean Monthly Temperature
Annual average (1899-2013) = 45.8°F



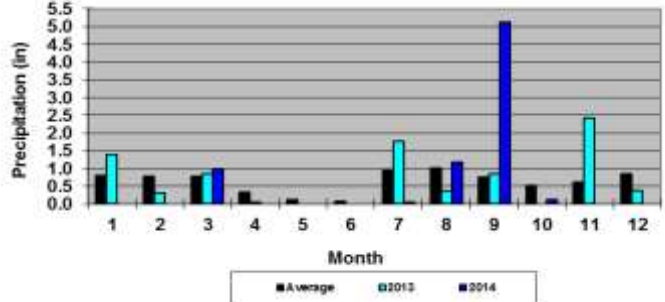
Flagstaff Mean Monthly Precipitation
Annual average (1899-2013) = 20.09"



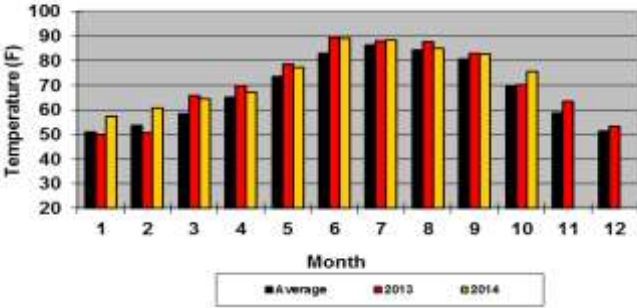
Phoenix Mean Monthly Temperature
Annual Average (1896-2013) = 71.9"



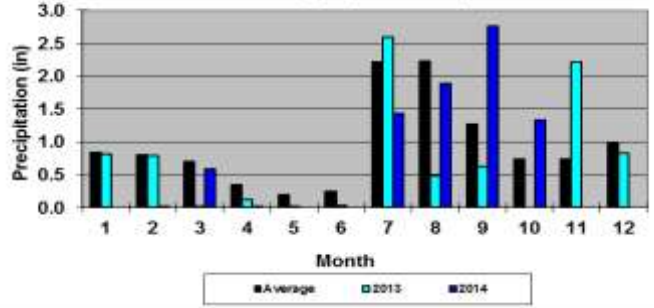
Phoenix Mean Monthly Precipitation
Annual Average (1896-2013) = 7.04"



Tucson Mean Monthly Temperature
Annual average (1895-2013) = 68.1°F



Tucson Mean Monthly Precipitation
Annual average (1895-2013) = 11.13"



FLAGSTAFF CLIMATE STATISTICS

October 2014

This October was the 5th warmest and had no significant ranking for precipitation.

Avg Max Temp (F)	67.5	Normal	62.0
Avg Min Temp (F)	34.8	Normal	31.5
Avg Mean Temp (F)	51.2	Normal	46.8
Departure from Normal (F)	+4.4		

Highest Monthly Avg Temp (F)	52.5	in 1988
Lowest Monthly Avg Temp (F)	38.6	in 1971

Highest Temp this month (F): 75 on 6th
 Lowest Temp this month (F): 26 on 30th

Record High (F): 85 on 10/01/1980

Record Low (F): -2 on 10/30/1971

No temperature or precipitation records this month:

Flagstaff Number of Days of:

Minimum Temp 40°F or higher	5
Minimum Temp 30°F or lower	6
Maximum Temp 70°F or higher	9

Maximum Temp 65°F or lower 10

Heating Degree Days	419	Normal	566
Cooling Degree Days	0	Normal	0
Degree base 65°F			

Total October Precipitation	0.69"
Normal October Precipitation	1.66"
Departure from normal	-0.97"
Greatest 24-Hr Precipitation	0.68" on 10/08-09
Total Precipitation Year-to-Date	16.63"
Departure from Normal	-1.60"

Number of Days:

Clear	26
Partly Cloudy	4
Cloudy	1

Greatest October Precipitation 9.86" in 1972
 Least October Precipitation 0 1917 1902 and 6 other years

Average Wind Speed	4.2 mph
Highest Peak Gust	38 mph from 260° on 12 th

PHOENIX CLIMATE STATISTICS

October 2014

This October was the 5th warmest and had no significant ranking for precipitation.

Avg Max Temp(F)	91.8	Normal	88.5
Avg Min Temp(F)	68.2	Normal	64.8
Avg Mean Temp (F)	80.0	Normal	76.7
Departure from Normal (F)	+3.3		

Highest Monthly Avg Temp (F)	82.7	in 2003
Lowest Monthly Avg Temp (F)	66.1	in 1916

Highest Temp this month (F): 99 on 3rd & 4th
 Lowest Temp this month (F): 64 on 29th & 30th

Record High (F): 107 on 10/01/1980, 10/02/1980
 Record Low (F): 34 on 10/30/1971

Temperature or precipitation records this month:

25th HiMax 96 tied, first set in 1990
 26th HiMin 71 tied, first set in 1983
 27th HiMin 71 tied, first set in 2001
 30th HiMax 94 tied, first set in 2008

Phoenix Number of Days of:

Minimum Temp 65°F or lower	5
Minimum Temp 70°F or higher	9
Maximum Temp 89°F or lower	7
Maximum Temp 95°F or higher	6

Heating Degree Days	0	Normal	6
Cooling Degree Days	471	Normal	367
Degree base 65°F			

Total October Precipitation 0.13"
 Normal October Precipitation 0.58"
 Departure from normal -0.45"
 Greatest 24-Hr Precipitation 0.08" on 10/19
 Total Precipitation Year-to-Date 7.46"
 Departure from Normal +0.96"

Greatest October Precipitation 4.40" in 1972
 Least October Precipitation 0.00" in 1973,
 1995, 1999 and 18 other years
 Average Wind Speed 4.9 mph
 Highest Peak Gust 33 mph from 120° on 19th

Number of Days:

Clear 19
 Partly Cloudy 10
 Cloudy 2

TUCSON CLIMATE STATISTICS
 October 2014

This October was the 3rd warmest and 21st wettest since 1896.

Avg Max Temp(F) 89.3 Normal 84.8
 Avg Min Temp(F) 62.1 Normal 57.3
 Avg Mean Temp(F) 75.7 Normal 71.0
 Departure from Normal (F) +4.7

Highest Monthly Avg Temp (F) 76.8 in 1950
 Lowest Monthly Avg Temp (F) 63.1 in 1920

Highest Temp this month (F): 98 on 4th
 Lowest Temp this month (F): 57 on 29th

Record High (F): 102 on 10/01/2010, 10/03/1993
 Record Low (F): 57 on 10/30/1971

Temperature or precipitation records this month:

8th Precip 0.67" set, previous record 0." in 19
 25th HiMax 95 set, previous record 94 in 1990
 25th HiMin 64 tied, first set in 1998
 26th HiMin 64 tied, first set in 1983
 27th HiMin 65 set, previous record 64 in 2004
 28th HiMin 68 set, previous record 65 in 2008
 31st HiMin 64 set, previous record 62 in 1987

Tucson Number of Days of:

Minimum Temp 60°F or lower 9
 Minimum Temp 70°F or higher 1
 Maximum Temp 84°F or lower 4
 Maximum Temp 90°F or higher 16

Heating Degree Days 0 Normal 24
 Cooling Degree Days 341 Normal 212
 Degree base 65°F

Total October Precipitation 1.33"
 Normal October Precipitation 0.89"
 Departure from normal +0.44"
 Greatest 24-Hr Precipitation 0.92" on 8th-9th
 Total Precipitation Year-to-Date 8.02"
 Departure from Normal -2.07"

Greatest October Precipitation 4.98" in 2000,1983
 Least October Precipitation 0.00" in 2013, 1982
 and 17 other years

Number of Days:

Clear 28
 Partly Cloudy 1
 Cloudy 1

Average Wind Speed 6.5 mph
 Highest Peak Gust 30 mph from 150° on 3rd

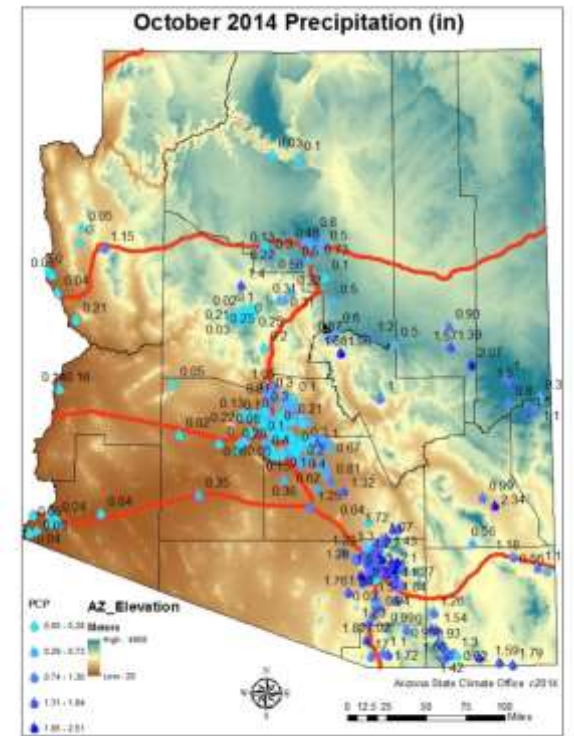
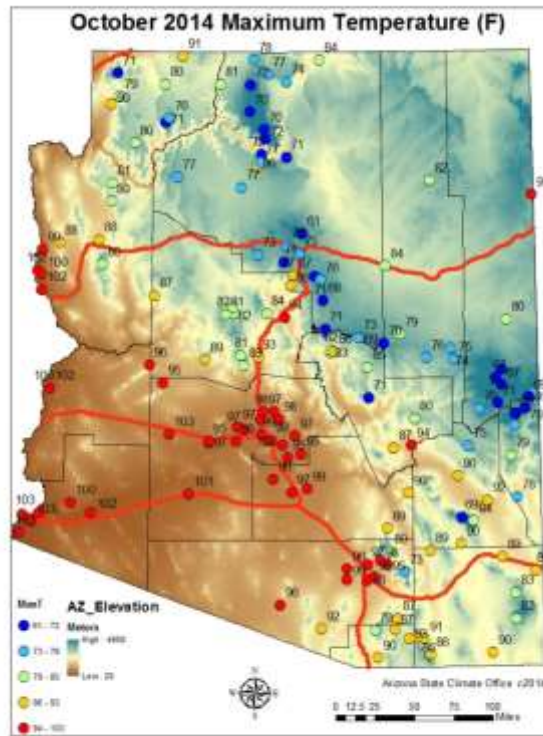
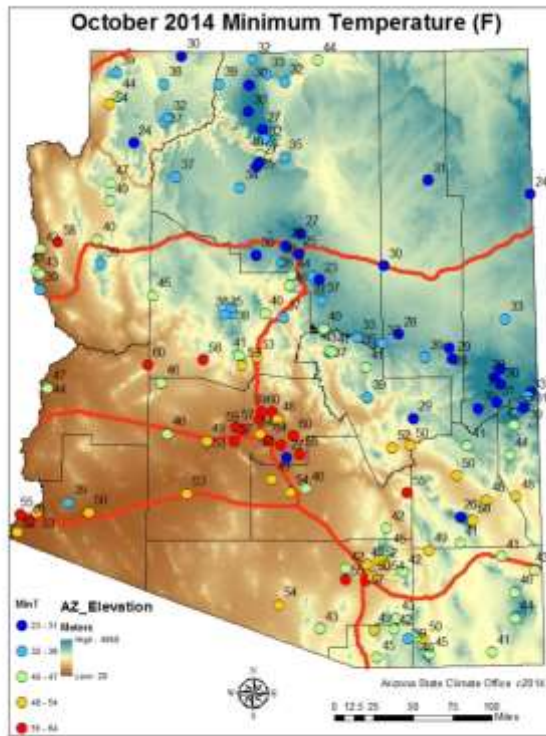
Data are from the National Weather Service and the National Climatic Data Center and are **preliminary**.

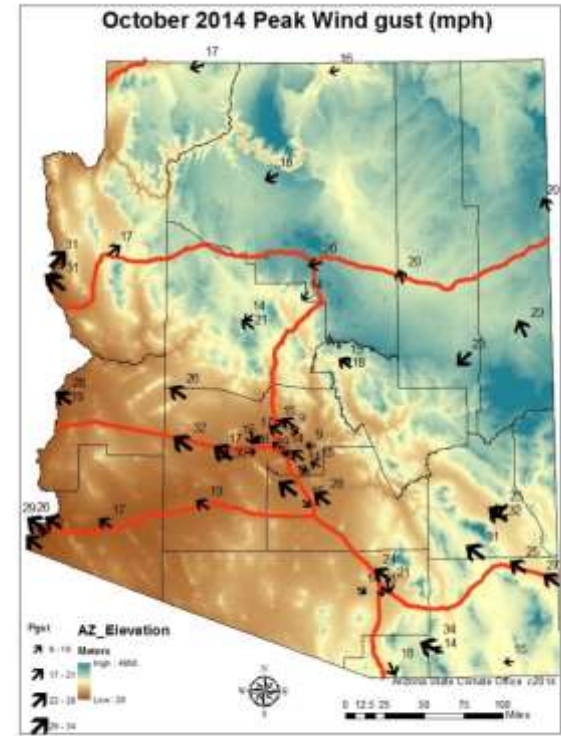
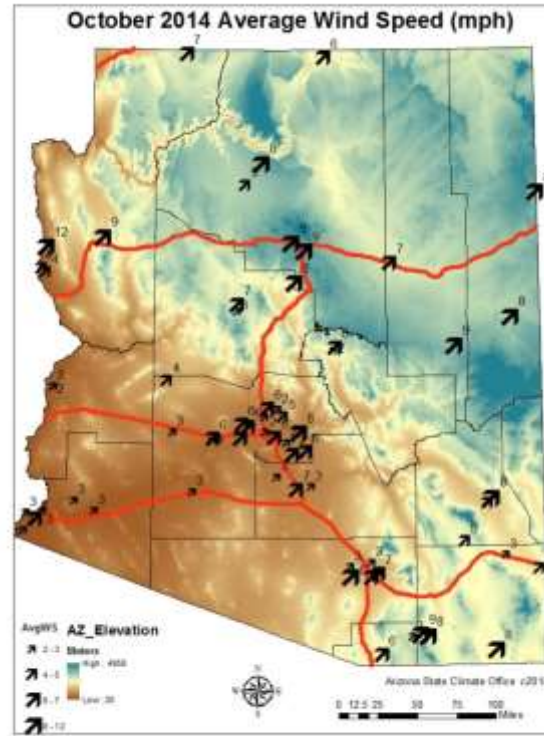
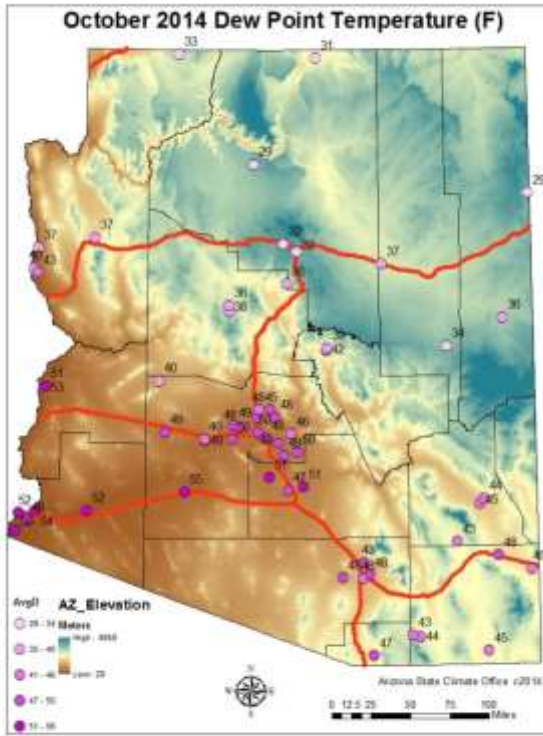
Wind Speeds:

Day	Phoenix		Flagstaff		Tucson	
	Avg	Max	Avg	Max	Avg	Max
1	5.2	16	4.2	22	6.8	20
2	5.6	23	6.1	26	5.9	15
3	5	20	3.7	19	6.8	30
4	4.4	15	3	21	8.2	21
5	5.4	14	2.4	17	6.5	18
6	5.1	14	2.3	18	4.3	14
7	6.2	16	3.1	18	7.3	21
8	7.3	21	5.5	23	6.2	24
9	5.8	18	5.2	25	5.8	20
10	6	14	4.1	21	5.3	17
11	4.9	13	4.9	21	6.2	16
12	7.9	24	7.8	38	6.9	25
13	5.6	22	9.1	30	4.8	15
14	5.3	17	2.2	17	7.7	26
15	4.2	17	4.9	29	7.6	22
16	3.8	15	4.3	21	4.6	15
17	5.3	24	1.6	16	6.4	17
18	3.9	14	2.1	17	6.7	18
19	5.2	33	3.5	36	7.3	24
20	4.1	16	2.1	20	8	23
21	4.9	15	3.9	23	6.4	24
22	3.3	13	3.1	22	6.3	15
23	3.4	12	2.3	17	6	15
24	3.9	15	2.9	16	5.8	18
25	5.8	15	6.2	30	7.1	22
26	4.3	16	9.5	30	6.1	22
27	4.6	14	4.2	21	5.5	16
28	3.8	18	1.9	16	5.7	17
29	3.6	13	2.3	14	6.6	15
30	3.4	14	2.8	16	6.7	17
31	5.5	21	7.7	32	9.9	28

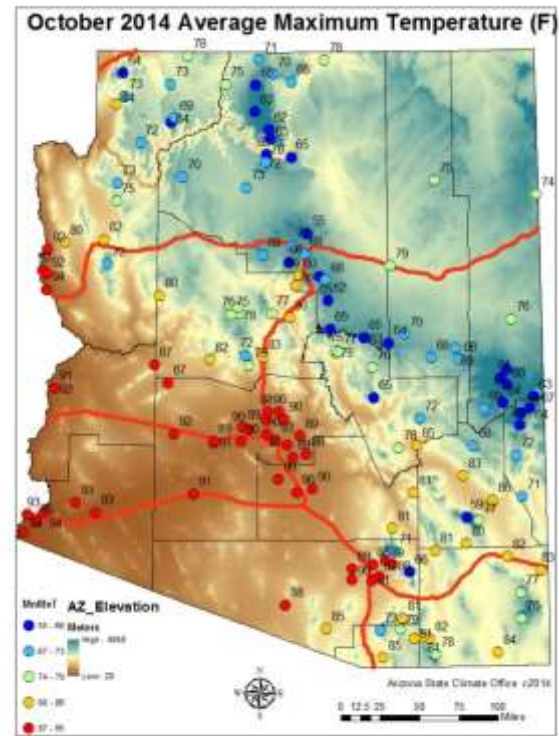
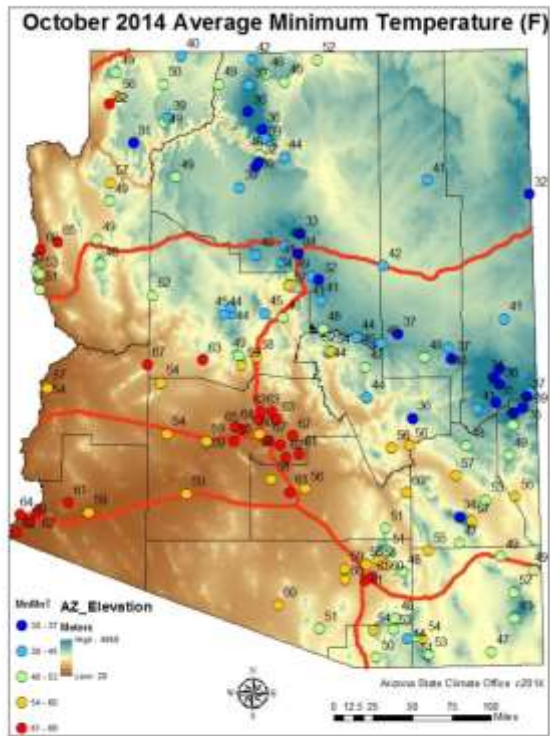
Dew Points for October:**Daily Average Dew Point (°F):**

Day	Phx	Tuc	Flg
1	43	40	21
2	38	33	25
3	40	36	25
4	44	42	26
5	45	40	28
6	48	42	31
7	55	55	38
8	58	61	42
9	62	61	40
10	60	56	38
11	57	52	33
12	37	46	23
13	36	39	21
14	38	41	29
15	47	45	31
16	47	44	34
17	46	43	35
18	50	47	37
19	51	48	36
20	52	49	36
21	52	48	37
22	51	46	33
23	49	46	30
24	49	46	36
25	53	50	37
26	52	50	37
27	48	44	34
28	45	44	27
29	43	39	25
30	44	42	28
31	45	37	23





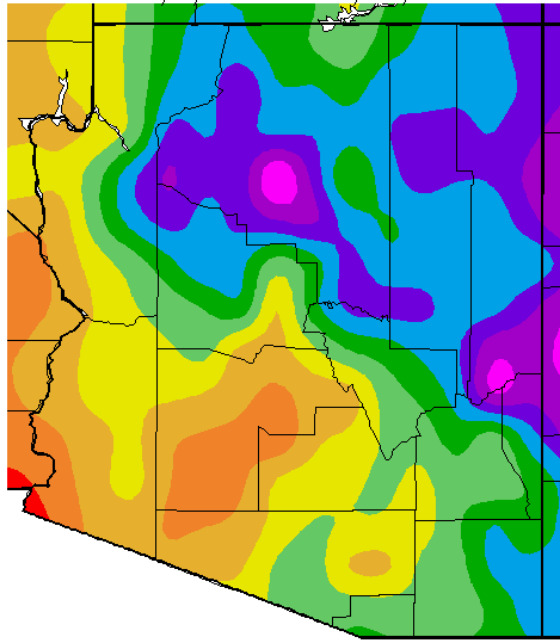
The lowest minimum temperature was 23°F at Greer, and the highest minimum was 64°F at Yuma. The lowest maximum temperature of 61°F was recorded at Snowslide Canyon, while the highest maximum temperature of 103°F was reported at Yuma. The lowest rainfall amount was 0.00” at several stations in Arizona and the highest was 2.51” at Tucson. The lowest dew point was 29°F at Grand Canyon Airport and the highest was 56°F at Yuma. The highest average wind speed was 12 mph at Laughlin. The highest peak wind gust was 34 mph at Pioneer Airport along the Colorado River.



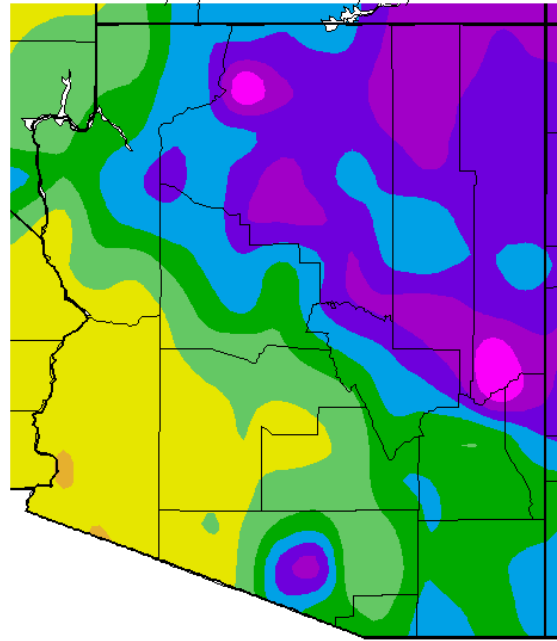
October 2014

The highest average minimum temperature was 69°F at Yuma and the lowest average minimum temperature was 30°F at Grand Canyon Airport. The highest average maximum temperature was 95°F at Yuma and lowest average maximum temperature was 55°F at Snowslide Canyon.

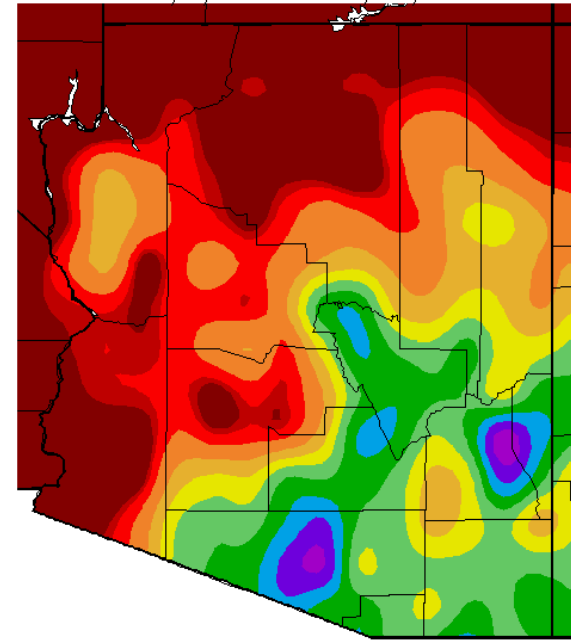
Av. Min. Temperature (deg. F)
10/1/2014 – 10/31/2014



Av. Max. Temperature (deg. F)
10/1/2014 – 10/31/2014



Total Precipitation (in.)
10/1/2014 – 10/31/2014

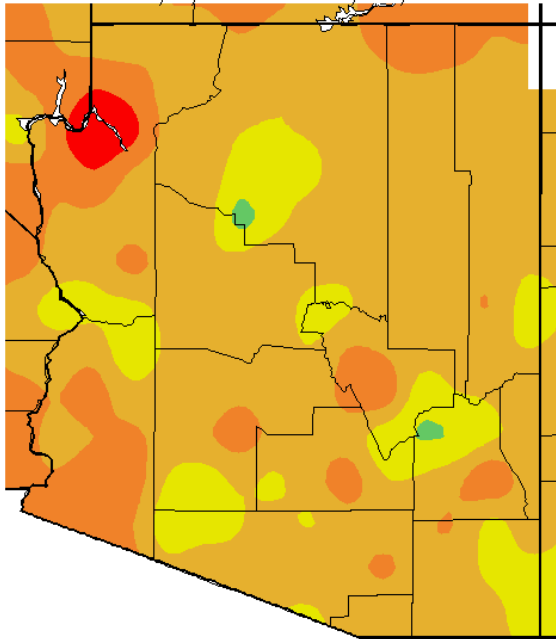


30 35 40 45 50 55 60 65 70 75 80
Generated 11/01/2014 at WRCC using provisional data.
NOAA Regional Climate Centers

65 70 75 80 85 90 95 100 105 110 115
Generated 11/01/2014 at WRCC using provisional data.
NOAA Regional Climate Centers

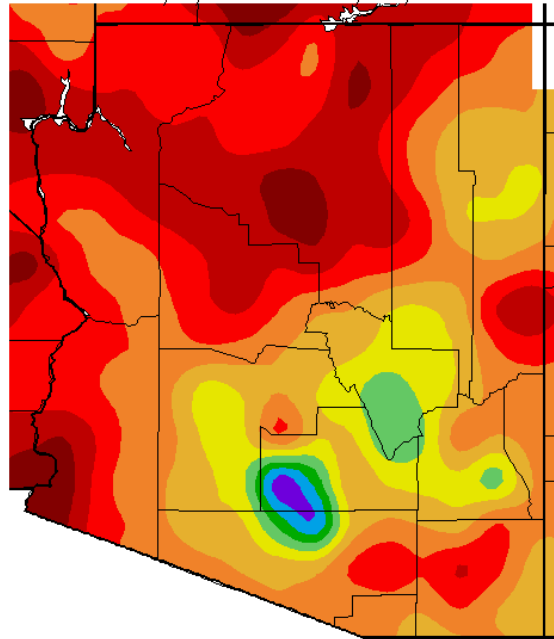
0.1 0.15 0.3 0.6 0.9 1.2 1.5 1.8 2.1 2.4 2.7
Generated 11/01/2014 at WRCC using provisional data.
NOAA Regional Climate Centers

Av. Min. Temperature dep from Ave (deg. F)
10/1/2014 – 10/31/2014



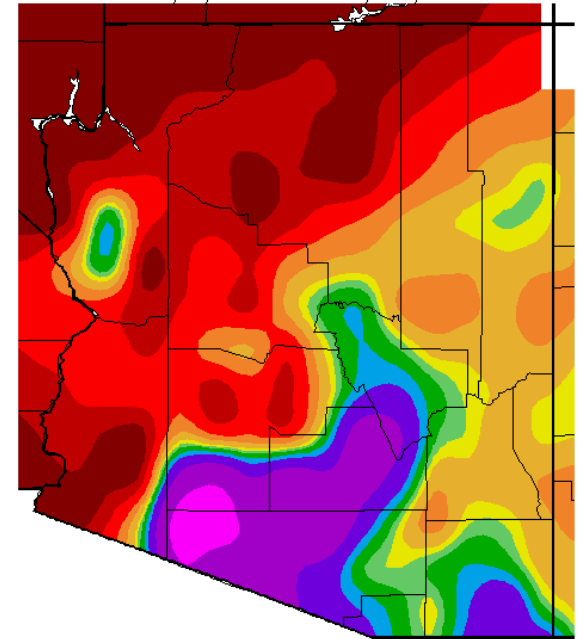
Generated 11/01/2014 at WRCC using provisional data.
NOAA Regional Climate Centers

Av. Max. Temperature dep from Ave (deg F)
10/1/2014 – 10/31/2014



Generated 11/01/2014 at WRCC using provisional data.
NOAA Regional Climate Centers

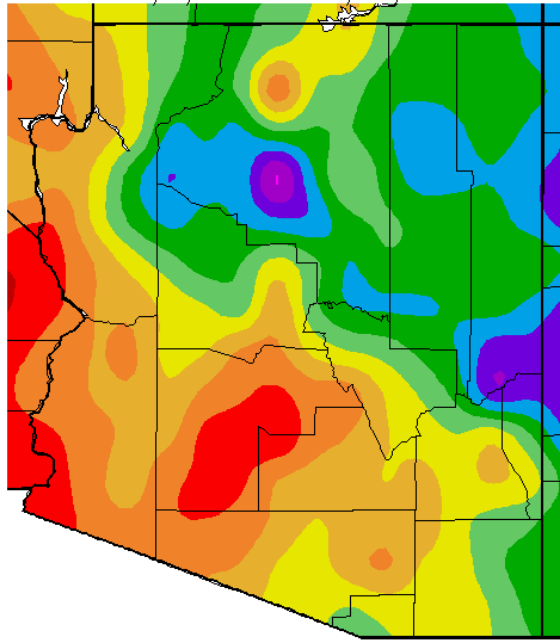
Percent of Average Precipitation (%)
10/1/2014 – 10/31/2014



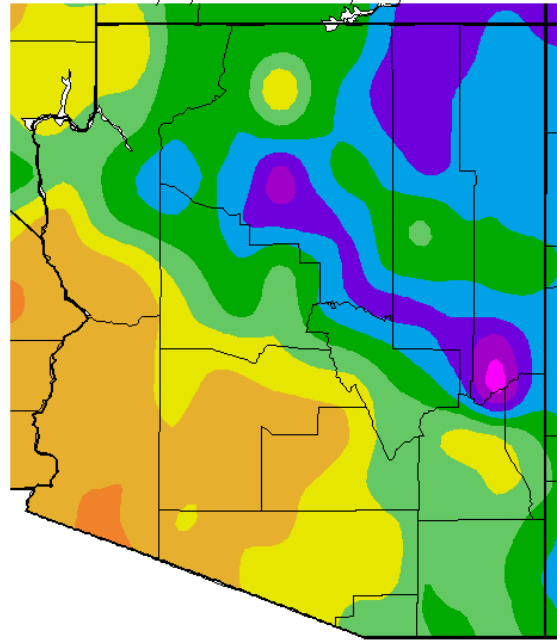
Generated 11/01/2014 at WRCC using provisional data.
NOAA Regional Climate Centers

October minimum temperatures were 2-4°F warmer than normal statewide with central Mohave County even warmer at 6-8°F above average. Daytime temperatures were 1-6°F warmer than normal in northern Arizona, and 0-3°F warmer than normal in most of southeastern Arizona. Only southern Gila and western Pinal counties were cooler than normal. October precipitation was much higher than normal in Cochise, Pima, Pinal and southern Maricopa counties. The northwestern half of the state was less than 50% of normal, with extremely dry conditions across the northern border.

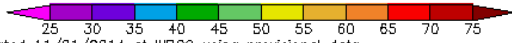
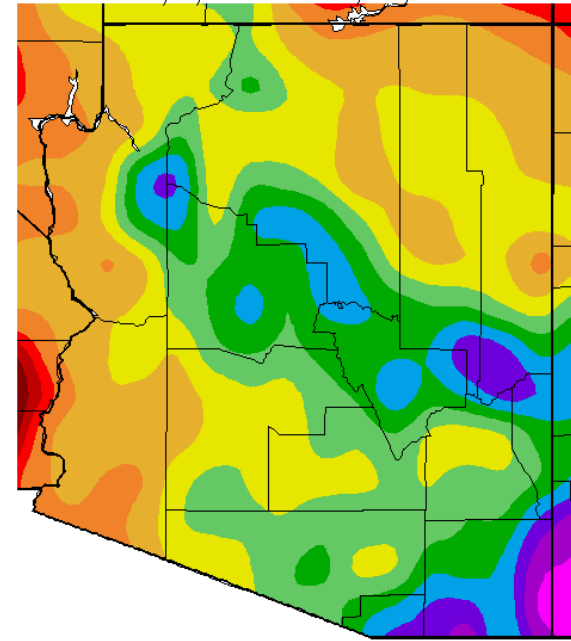
Av. Min. Temperature (deg. F)
1/1/2014 - 10/31/2014



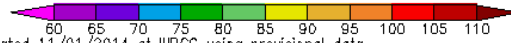
Av. Max. Temperature (deg. F)
1/1/2014 - 10/31/2014



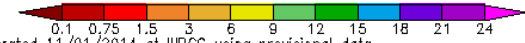
Total Precipitation (in.)
1/1/2014 - 10/31/2014



Generated 11/01/2014 at WRCC using provisional data.
NOAA Regional Climate Centers

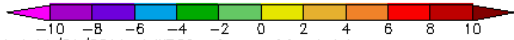
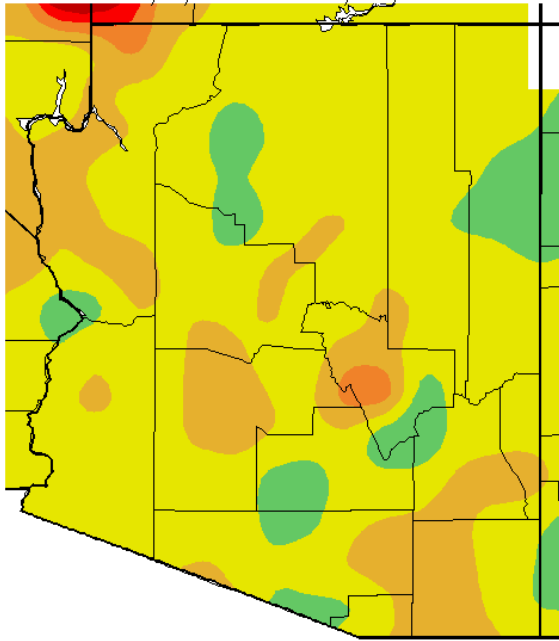


Generated 11/01/2014 at WRCC using provisional data.
NOAA Regional Climate Centers



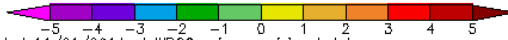
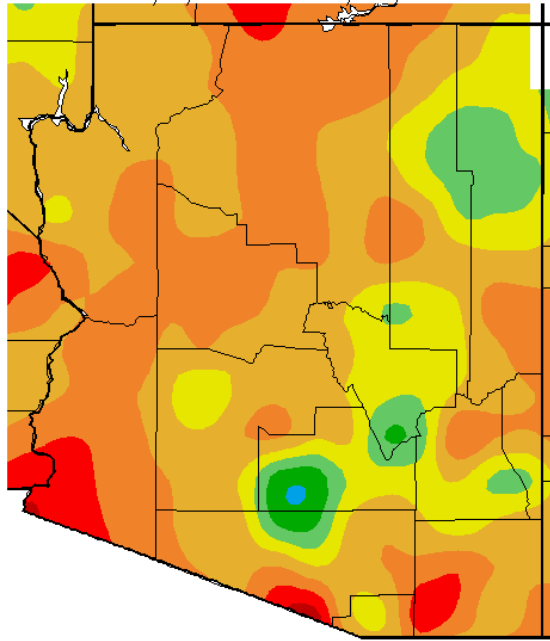
Generated 11/01/2014 at WRCC using provisional data.
NOAA Regional Climate Centers

Av. Min. Temperature dep from Ave (deg. F)
1/1/2014 – 10/31/2014



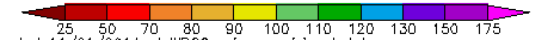
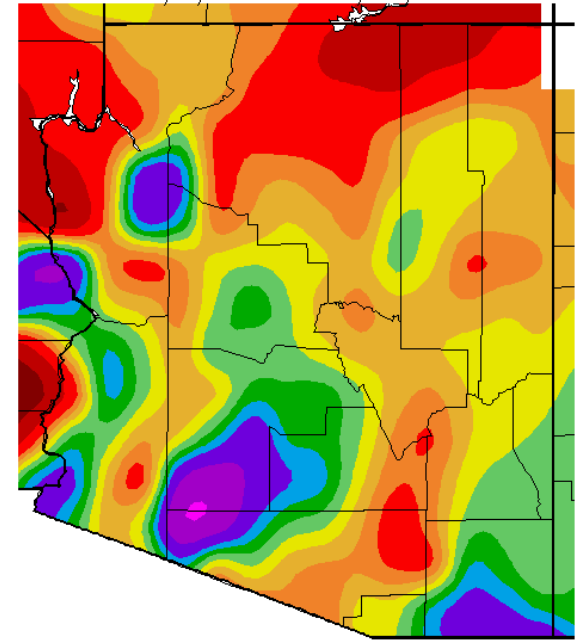
Generated 11/01/2014 at WRCC using provisional data.
NOAA Regional Climate Centers

Av. Max. Temperature dep from Ave (deg F)
1/1/2014 – 10/31/2014



Generated 11/01/2014 at WRCC using provisional data.
NOAA Regional Climate Centers

Percent of Average Precipitation (%)
1/1/2014 – 10/31/2014

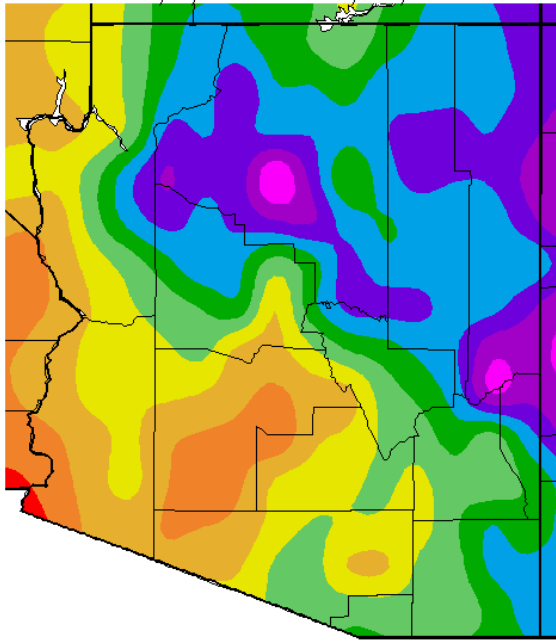


Generated 11/01/2014 at WRCC using provisional data.
NOAA Regional Climate Centers

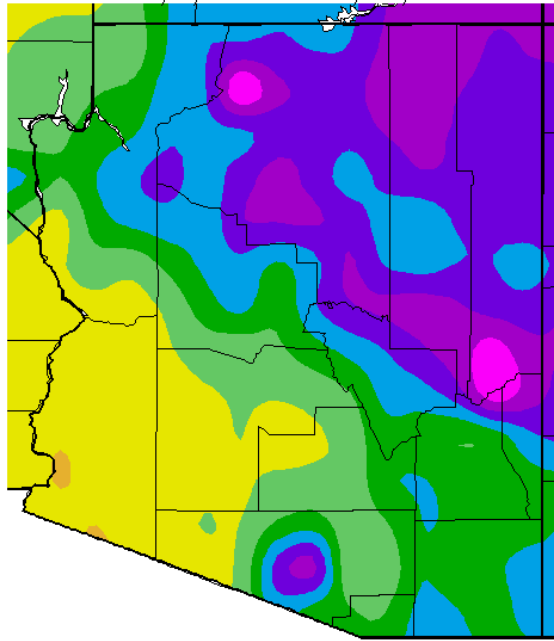
Calendar Year 2014

Calendar year minimum temperatures have been 0-2°F warmer than normal statewide with a few warmer and cooler pockets. Daytime highs have been 0 to 3°F warmer than normal statewide, though western Pinal, southern Gila and central Apache counties have been cooler than normal. Precipitation so far this year has been less than 90% of normal in much of eastern Arizona, and greater than 100% of normal in Cochise, eastern Graham, southern Greenlee, western Pima, Yuma, Pinal, and La Paz counties. Mohave County has seen both wetter than normal and drier than normal conditions.

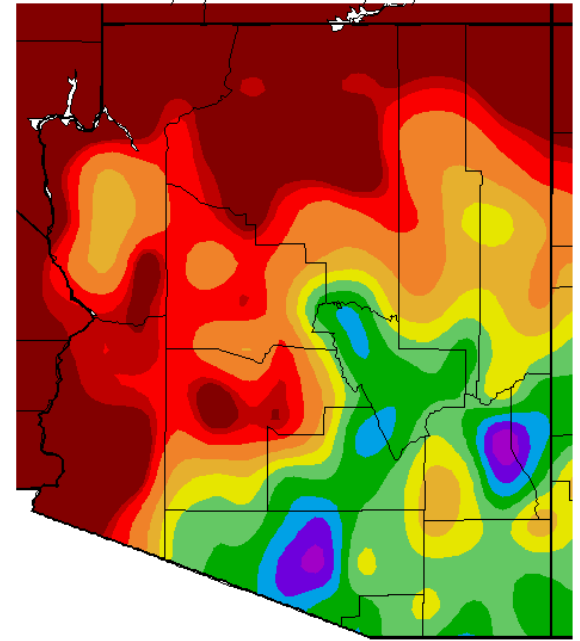
Av. Min. Temperature (deg. F)
10/1/2014 – 10/31/2014



Av. Max. Temperature (deg. F)
10/1/2014 – 10/31/2014



Total Precipitation (in.)
10/1/2014 – 10/31/2014

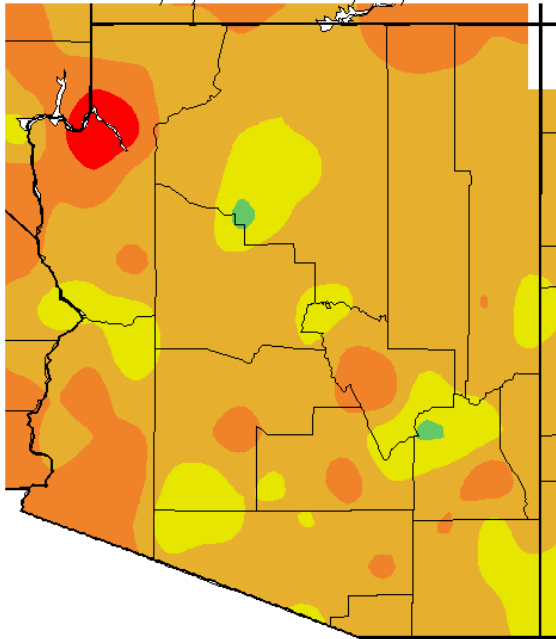


30 35 40 45 50 55 60 65 70 75 80
Generated 11/01/2014 at WRCC using provisional data.
NOAA Regional Climate Centers

65 70 75 80 85 90 95 100 105 110 115
Generated 11/01/2014 at WRCC using provisional data.
NOAA Regional Climate Centers

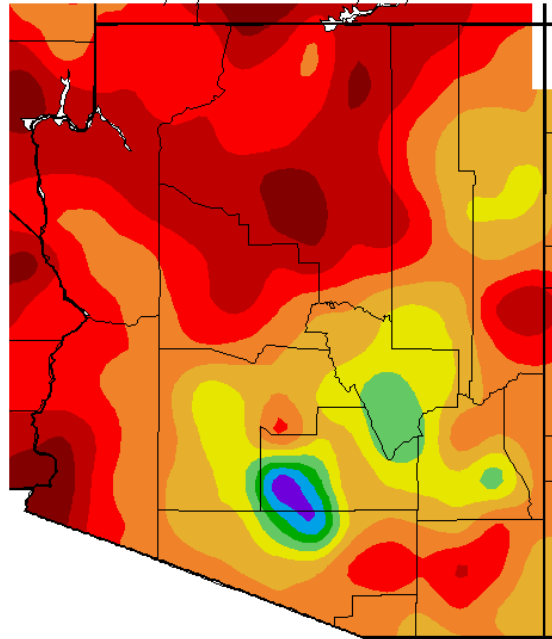
0.1 0.15 0.3 0.6 0.9 1.2 1.5 1.8 2.1 2.4 2.7
Generated 11/01/2014 at WRCC using provisional data.
NOAA Regional Climate Centers

Av. Min. Temperature dep from Ave (deg. F)
10/1/2014 – 10/31/2014



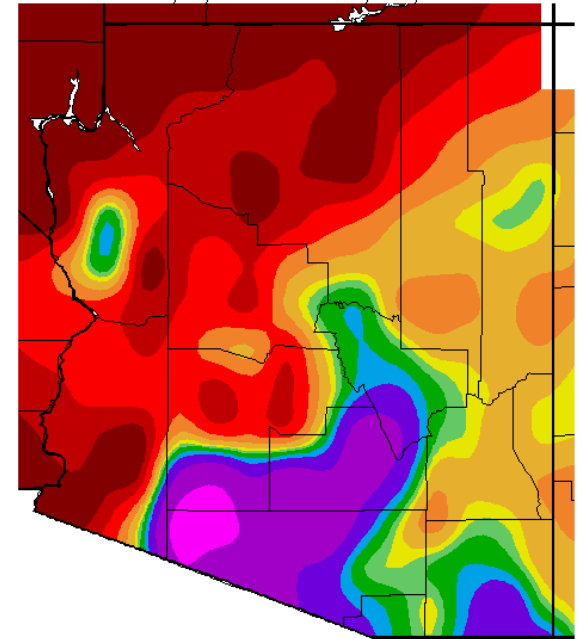
Generated 11/01/2014 at WRCC using provisional data.
NOAA Regional Climate Centers

Av. Max. Temperature dep from Ave (deg F)
10/1/2014 – 10/31/2014



Generated 11/01/2014 at WRCC using provisional data.
NOAA Regional Climate Centers

Percent of Average Precipitation (%)
10/1/2014 – 10/31/2014

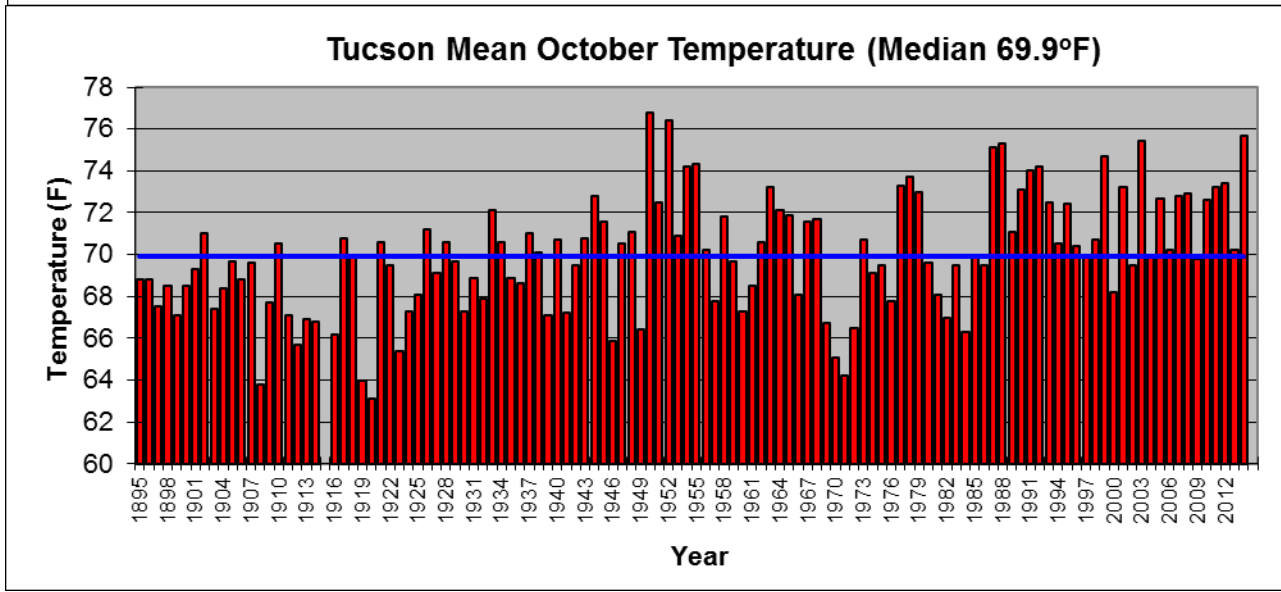
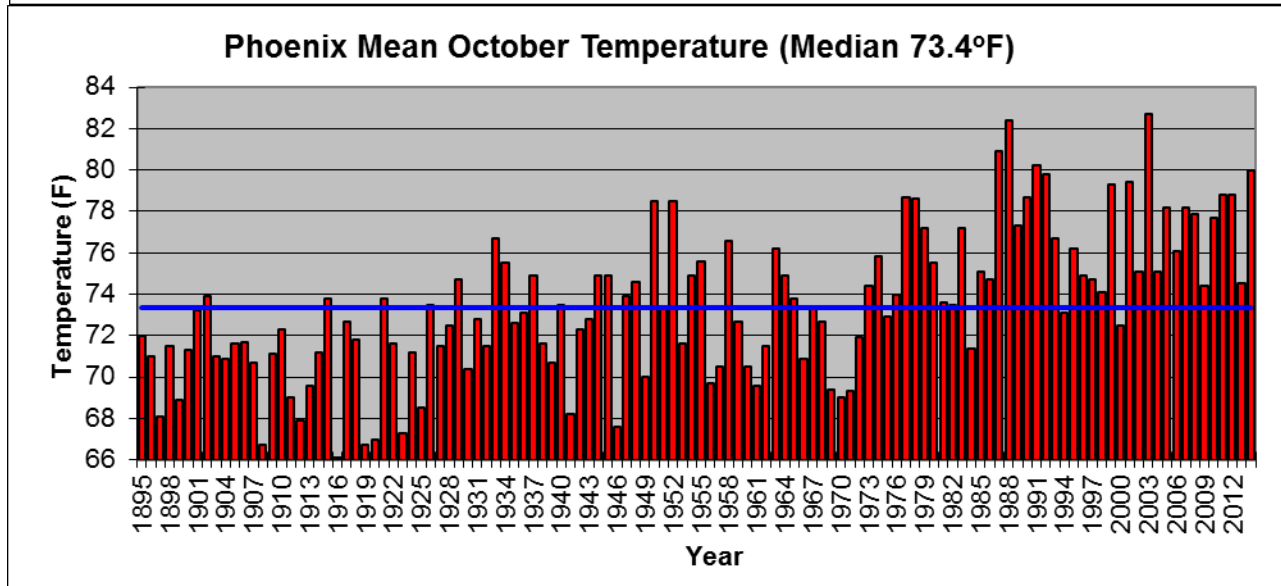
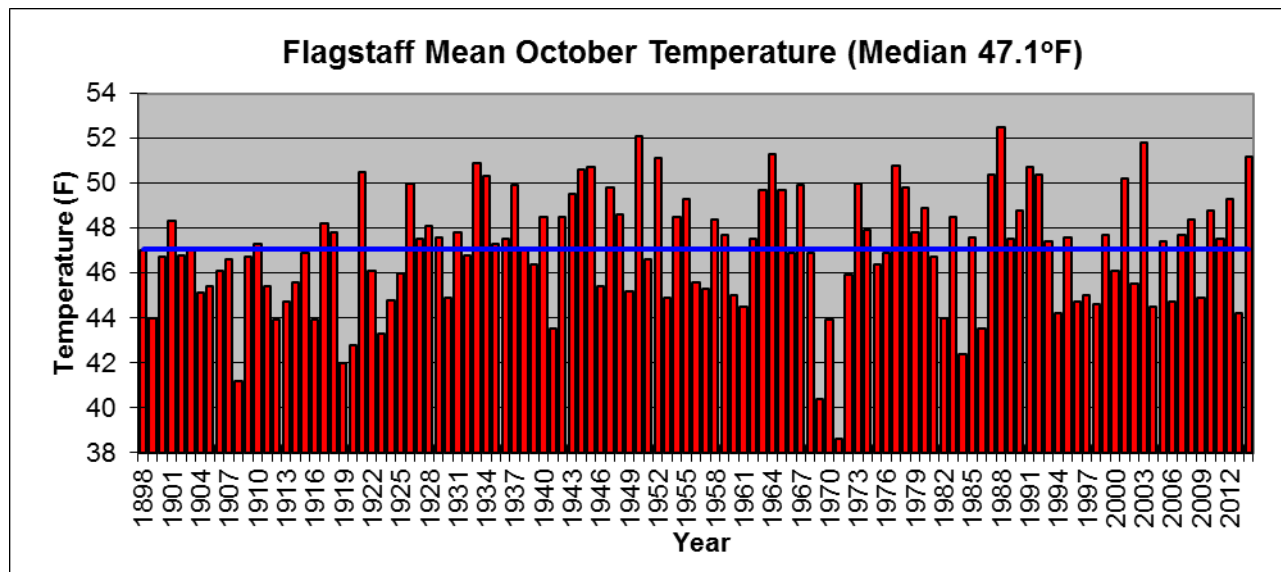


Generated 11/01/2014 at WRCC using provisional data.
NOAA Regional Climate Centers

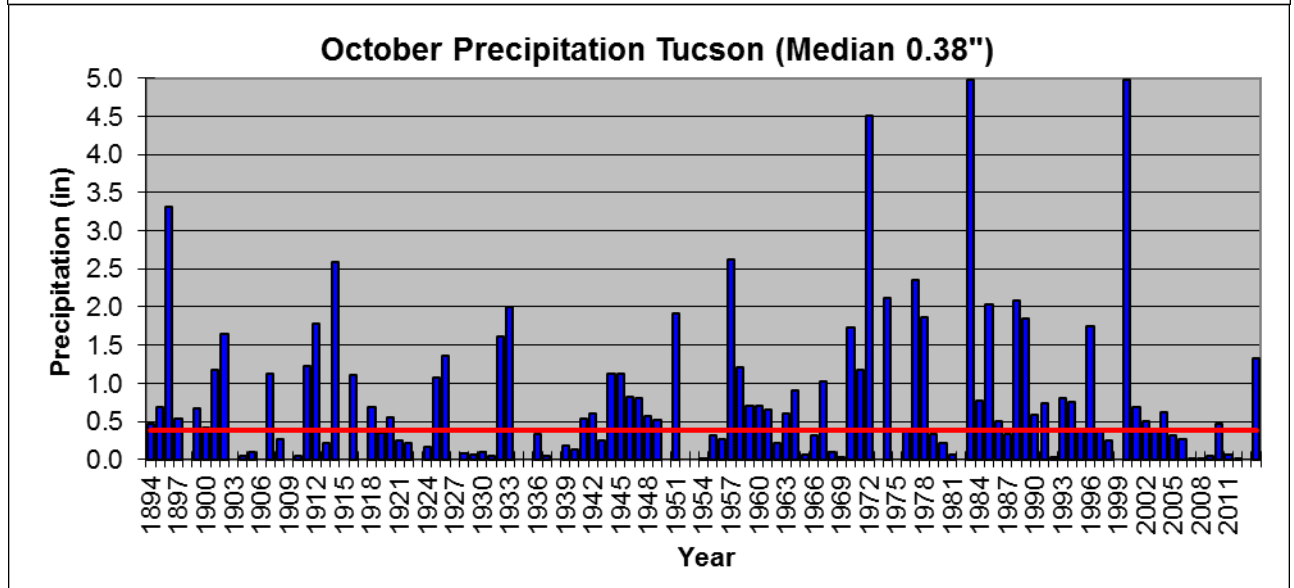
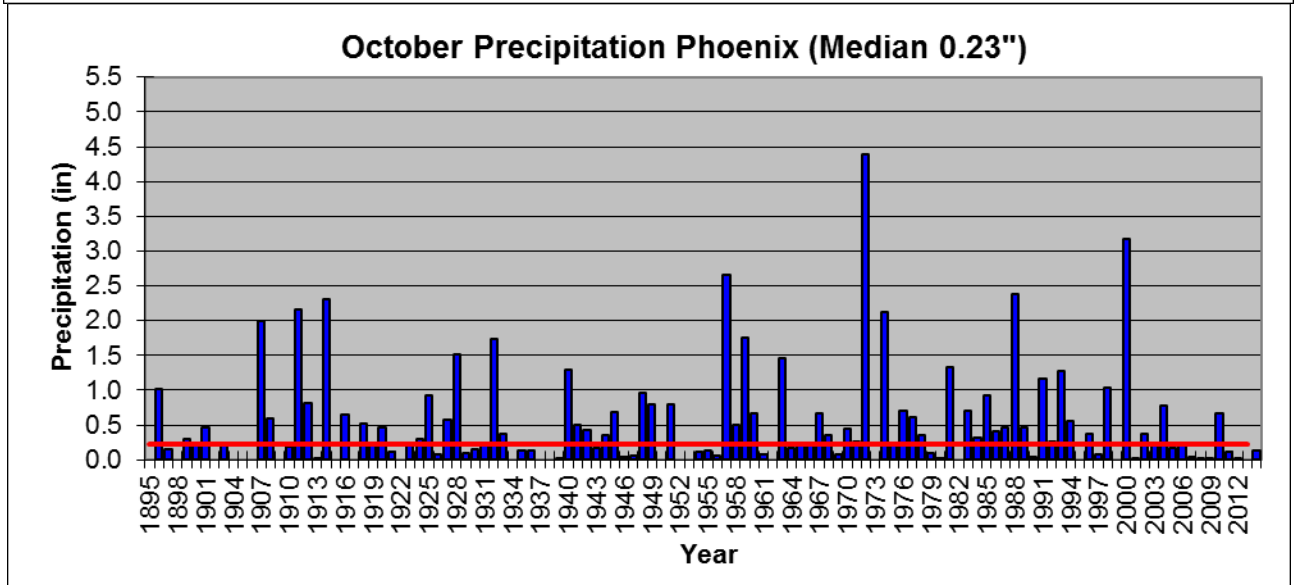
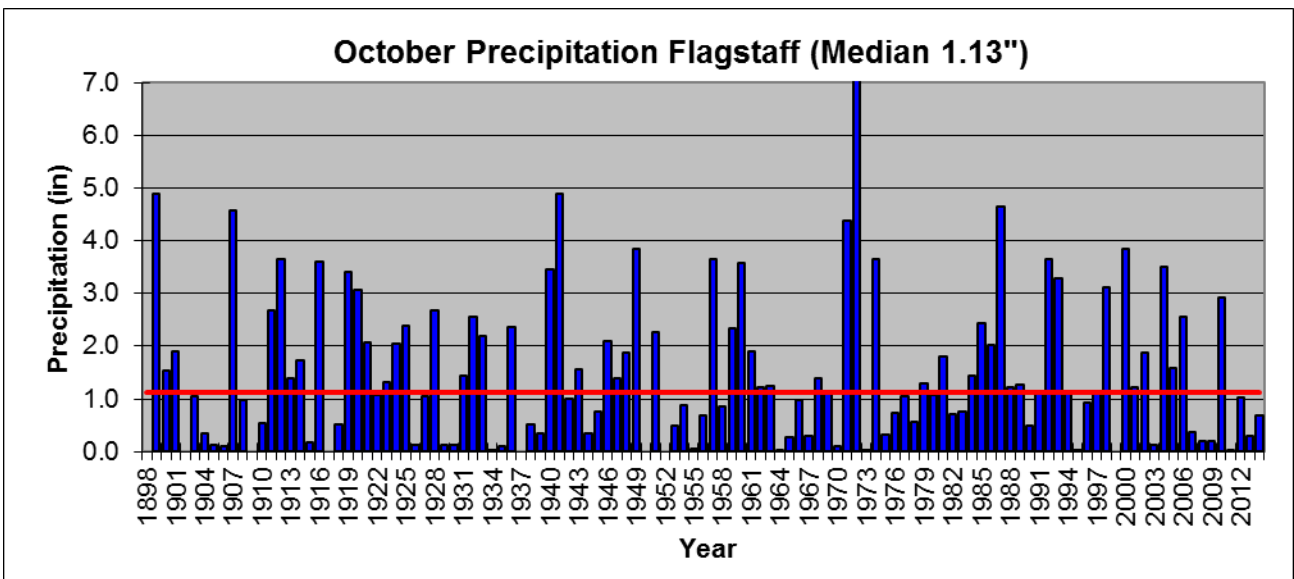
2015 Water Year

The new water year minimum temperatures were 2-4°F warmer than normal statewide with central Mohave County even warmer at 6-8°F above average. Daytime temperatures were 1-6°F warmer than normal in northern Arizona, and 0-3°F warmer than normal in most of southeastern Arizona. Only southern Gila and western Pinal counties were cooler than normal. Precipitation was much higher than normal in Cochise, Pima, Pinal and southern Maricopa counties. The northwestern half of the state was less than 50% of normal, with extremely dry conditions across the northern border.

October Mean Temperature Graphs – Flagstaff, Phoenix, and Tucson 1895-2014:

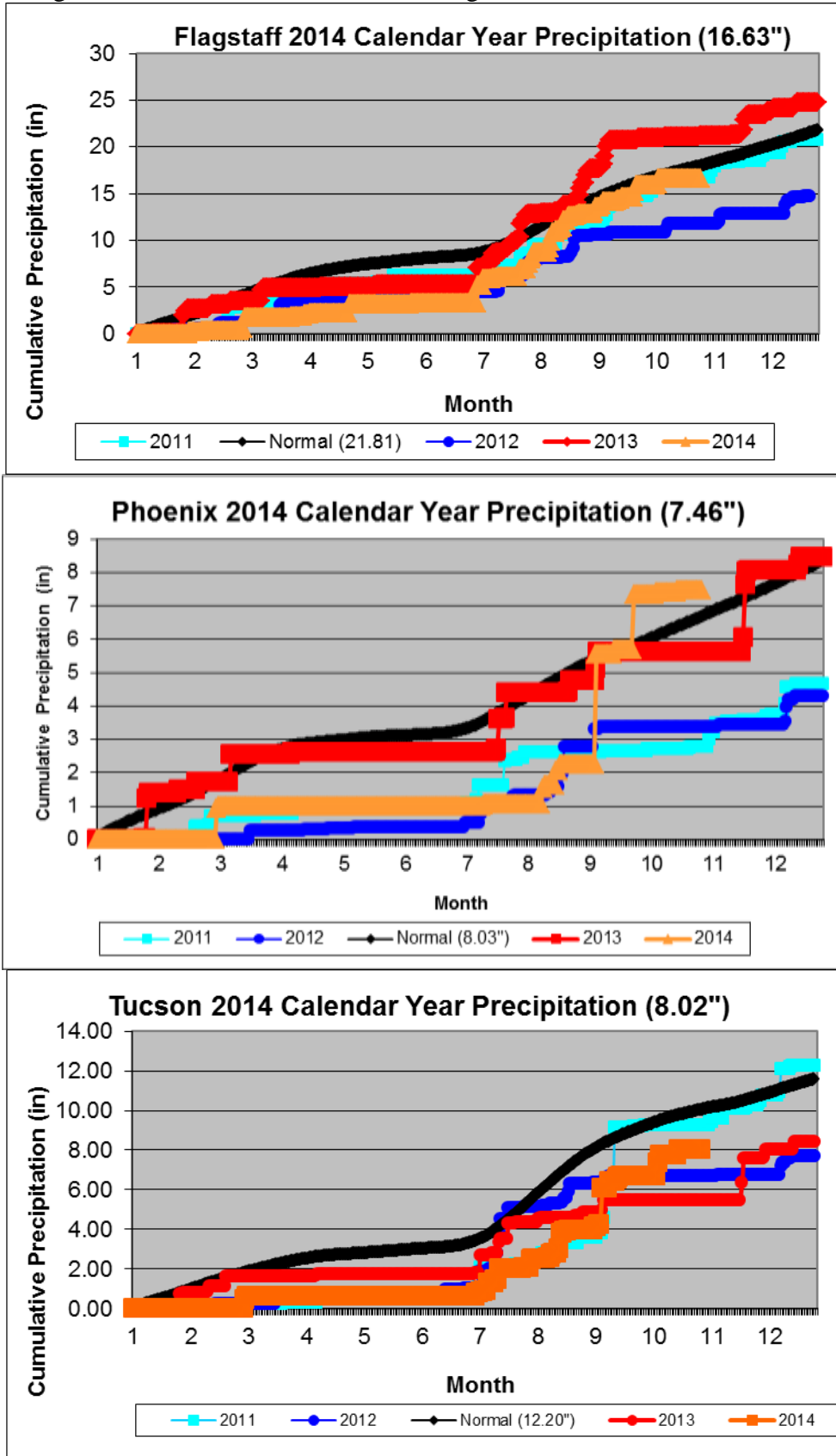


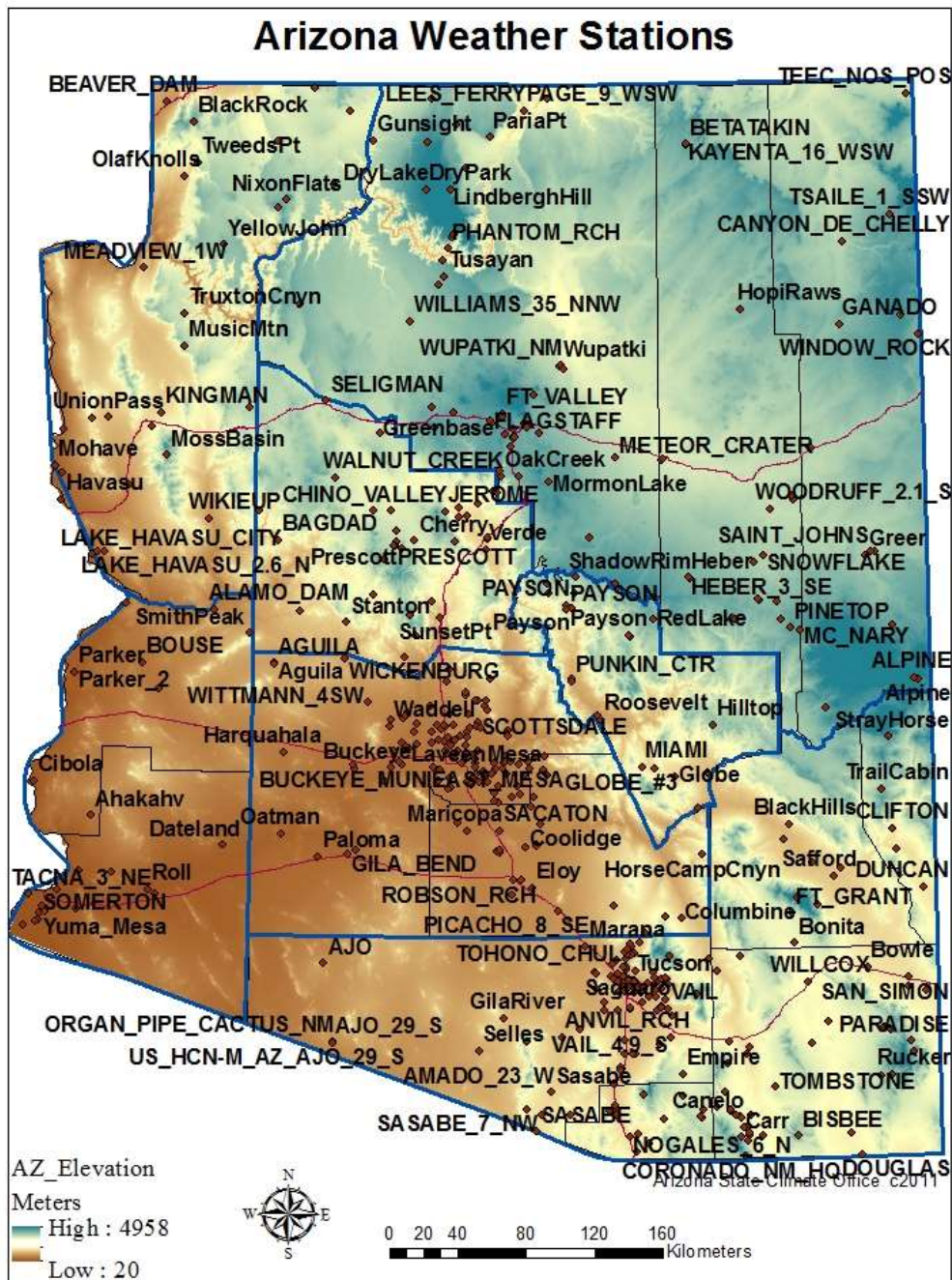
October Mean Precipitation Graphs – Flagstaff, Phoenix, and Tucson 1895-2014:



2014 Cumulative Precipitation Graphs – Flagstaff, Phoenix and Tucson:

Flagstaff is now near average while Phoenix is wetter than average and Tucson is still below average.





The downloadable normals and extremes calendars use the following abbreviations:

NORM = 30 year (1971-2000) average value (degrees Fahrenheit (F))

OBS = The temperature observation for that day this year

AVG = Average daily temperature

HI MAX = Highest maximum temperature for that day (F)

LO MAX = Lowest maximum temperature for that day (F)

LO MIN = Lowest minimum temperature for that day (F)

HI MIN = Highest minimum temperature for that day (F)

Mx PCP = Maximum precipitation for that day (inches)

Mx SNO = Maximum snowfall for that day (inches)